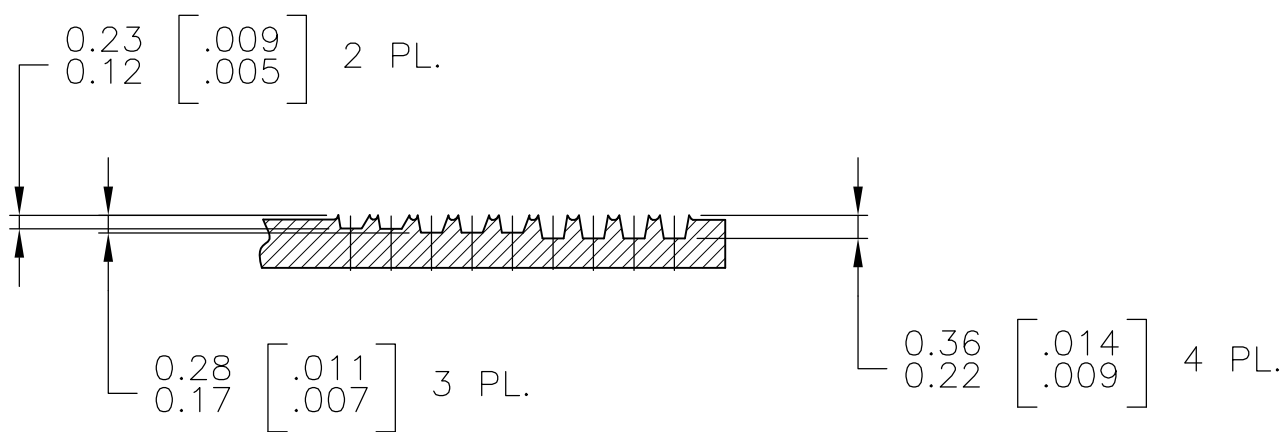
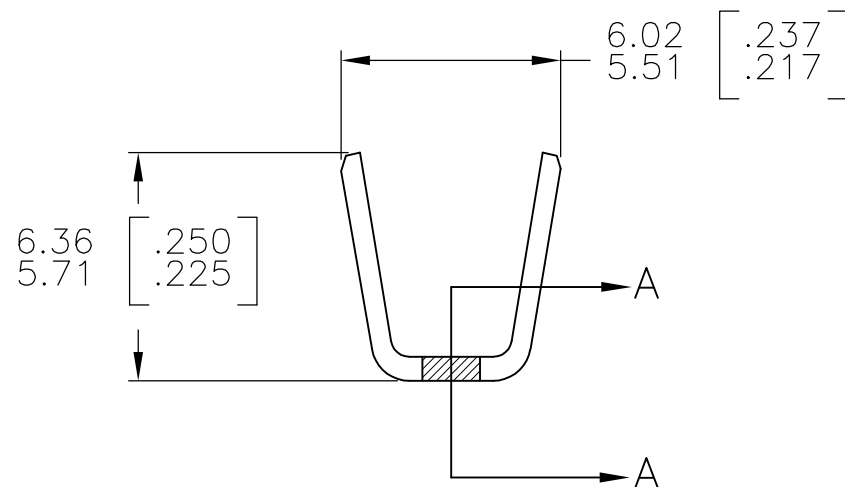
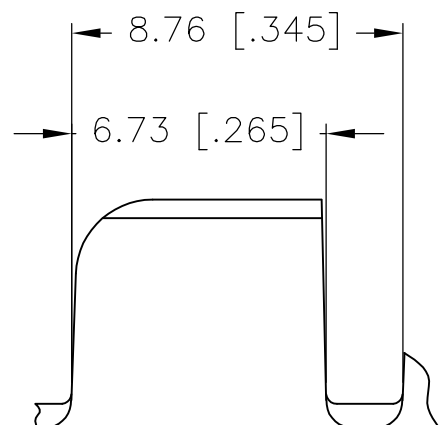
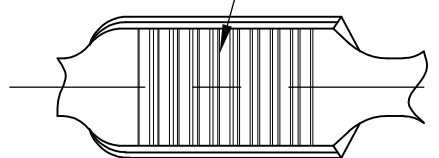


THIS DRAWING IS UNPUBLISHED. RELEASED FOR PUBLICATION

© COPYRIGHT BY TYCO ELECTRONICS CORPORATION. ALL RIGHTS RESERVED.

LOC	DIST	REVISIONS					
AF	50	P	LTR	DESCRIPTION	DATE	DWN	APVD
			F2	REVISED PER ECR-07-018788	20AUG07	HMR	GP

9 AMPLIVAR SERRATIONS



SECTION A-A
SCALE : 10:1

- 1 PRODUCT PROVIDED IN STRIP FORM ON REELS; BREAKS MAY BE PRESENT.
- 2 DIMENSIONS IN BRACKETS ARE IN INCHES.
- 3 CRIMP WIDTH: .180 F (AMPLIVAR TYPE)
CRIMP HEIGHT (±.002)=(TOTAL CMA+23,000)/312,500
GENERAL APPLICATION GUIDELINES MUST BE FOLLOWED AS SPECIFIED IN CATALOG #82221
FOR APPLICATOR INFORMATION CALL : 1-800-722-1111
FOR PRODUCT INFORMATION CALL : 1-800-522-6752

OBSOLETE	REVERSE	62310-3
	STANDARD	62310-2
	REELING	PART NO

THIS DRAWING IS A CONTROLLED DOCUMENT.		DWN RAGHAVENDRA 31JAN06	Tyco Electronics Corporation Harrisburg, PA 17105-3608	
DIMENSIONS: mm [INCHES]		CHK G.D.PORTA	NAME SPLICE, AMPLIVAR 7000-13000 CMA	
TOLERANCES UNLESS OTHERWISE SPECIFIED:		APVD G.D.PORTA	PRODUCT SPEC	
0 PLC ± -		APPLICATION SPEC		
1 PLC ± -		114-2003		
2 PLC ± 0.38[.015]		SIZE	CAGE CODE	DRAWING NO
3 PLC ± -		A3 00779		C-62310
4 PLC ± -		RESTRICTED TO		
ANGLES ± 1°		CUSTOMER DRAWING		
MATERIAL 0.64[.025] BRASS	FINISH TIN PL.	SCALE 5:1		SHEET 1 OF 1
REV F2				

